

# Annual Newsletter & Christmas Appeal 2015



Registered Charity No 1094766



'Star' created by Mya aged 6

Dear Friends,

A warm welcome from all at the **Pastoral Care Project**. We are so thankful to God for his providence which has inspired you to support our charitable work. Your prayers, time and donations are much appreciated as noted in our Annual Report. See link on [www.pastoralcareproject.org.uk](http://www.pastoralcareproject.org.uk).

## Here are few highlights and recent events:

**HeARTS and Minds** pilot Volunteering Programme began in Nuneaton by St Thomas More Sixth Form College, Aldersgate Independent Living – Methodist Housing Association and the Pastoral Care Project - responding to interest from young people wishing to visit older people in a pastoral capacity.



**Networking with St Augustine's parish Solihull** two events were offered in caring for people with dementia. **A Retreat Day - Psalm 4 'The Lord hears me whenever I call Him'**, in April.

Then in September **'His Mercy is from Age to Age'** where Community Leaders contributed to talks and workshops. Our thanks to Bishop David McGough our lead bishop, who was the keynote speaker and to St Peters School for leading the Music during the Prayer Service.

**Touched by Music and Sounds and Senses:** There is a growing interest in understanding how to and how not to use music with vulnerable people:

**Worcester Cathedral' All Together Worship'** the Pastoral Care Project led Worshipping with People who

have Dementia' of the 850 on the day 90 attended the workshop.

**Conference for Health Care Chaplains, St Marys University, Twickenham.** Project led the day: 'His Mercy is from Age to Age' and Touched by Music.

## Forthcoming event:

### Dementia - Prayer Week 12-19th March 2016

*"An excellent Project, dealing with a very real problem. We all come into contact with dementia every day so please support this Pastoral Care Project in any way you can."*

In keeping with our theme **'His Mercy is from Age to Age'** It would be great to offer our resources to more parishes and schools as I am sure they would like to join in as well - could you help in any way?

All Christmas donations will be used to develop and distribute resources for the **Dementia – Prayer Week 12 -19th March 2016.**

Donations can be made on-line via our PayPal link or cheques made payable to Pastoral Care Project or contact the office for BACS details. If you pay tax would you consider using the gift aid form?



Pastoral Care Project, St Georges House, Gerards Way, Coleshill B46 3FG • Tel: 01675 434035

Email: [info@pastoralcareproject.org.uk](mailto:info@pastoralcareproject.org.uk) • [www.pastoralcareproject.org.uk](http://www.pastoralcareproject.org.uk)

FACEBOOK link: <https://www.facebook.com/pastoralcareproject>





Registered Charity No 1094766

# News from Around the Table

## Vacancies:

The Charity Trustees are currently looking for inspirational people to join them to respond to the growth in networking opportunities.

## Promoters:

The Project is also looking for people willing to network in their area, ensuring people with dementia and those who care for them feel they are supported.

For further information please email [francesmolloy@pastoralcareproject.org.uk](mailto:francesmolloy@pastoralcareproject.org.uk)

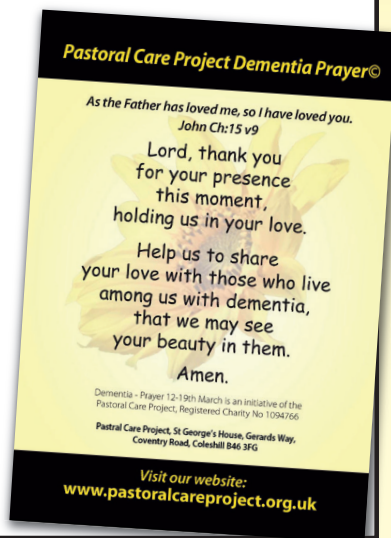


## Dementia - Prayer Week 12-19th March



The response each year is remarkable as more people of all ages are responding and doing something where they live – the on-line resources have helped them be more confident –and creative where they live.

Often we hear of pupils and teachers who have relatives who have Dementia - they can identify with other families and so are pleased to commit to prayer and raise funds for our charitable work.

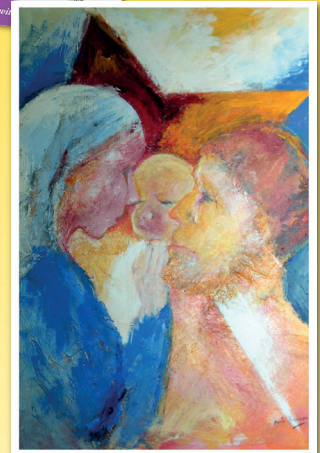


On behalf of the trustees, volunteers, Maria in the office and myself we wish you a holy and happy Christmas

Frances Molloy  
Project Founder & Manager  
Email: [francesmolloy@pastoralcareproject.org.uk](mailto:francesmolloy@pastoralcareproject.org.uk) or [fmolloy6@gmail.com](mailto:fmolloy6@gmail.com)

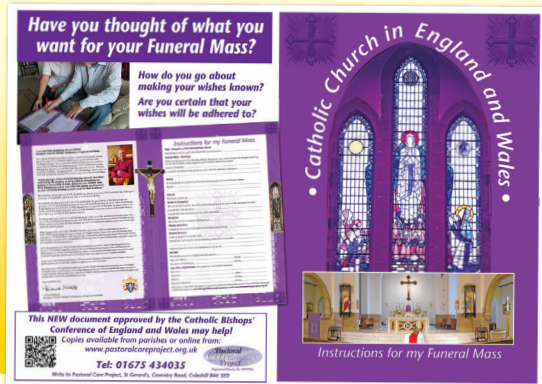
Telephone 01675 434035

Office hours are flexible so do leave a message, and I will be delighted to return your call and speak with you.



## Instructions for my Funeral Mass

This popular document is produced by and available to purchase from the Pastoral Care Project. Please visit the on-line shop on the website or contact the office 01675 434035



Designed by Andrew Aske • [www.a.aske.co.uk](http://www.a.aske.co.uk)

Pastoral Care Project, St Georges House, Gerards Way, Coleshill B46 3FG • Tel: 01675 434035

Email: [info@pastoralcareproject.org.uk](mailto:info@pastoralcareproject.org.uk) • [www.pastoralcareproject.org.uk](http://www.pastoralcareproject.org.uk)

FACEBOOK link: <https://www.facebook.com/pastoralcareproject>

